

2. Image Formation



3. Image Processing



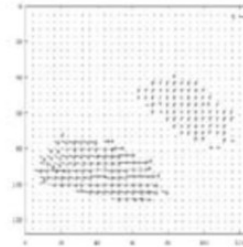
4. Features



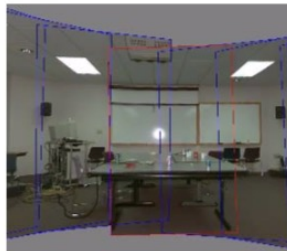
5. Segmentation



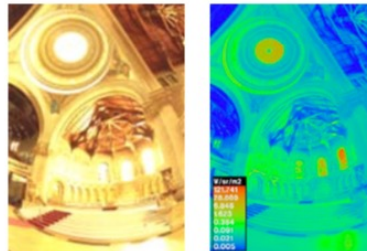
6-7. Structure from Motion



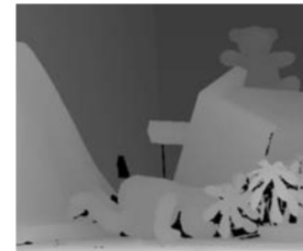
8. Motion



9. Stitching



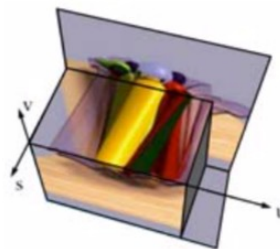
10. Computational Photography



11. Stereo



12. 3D Shape



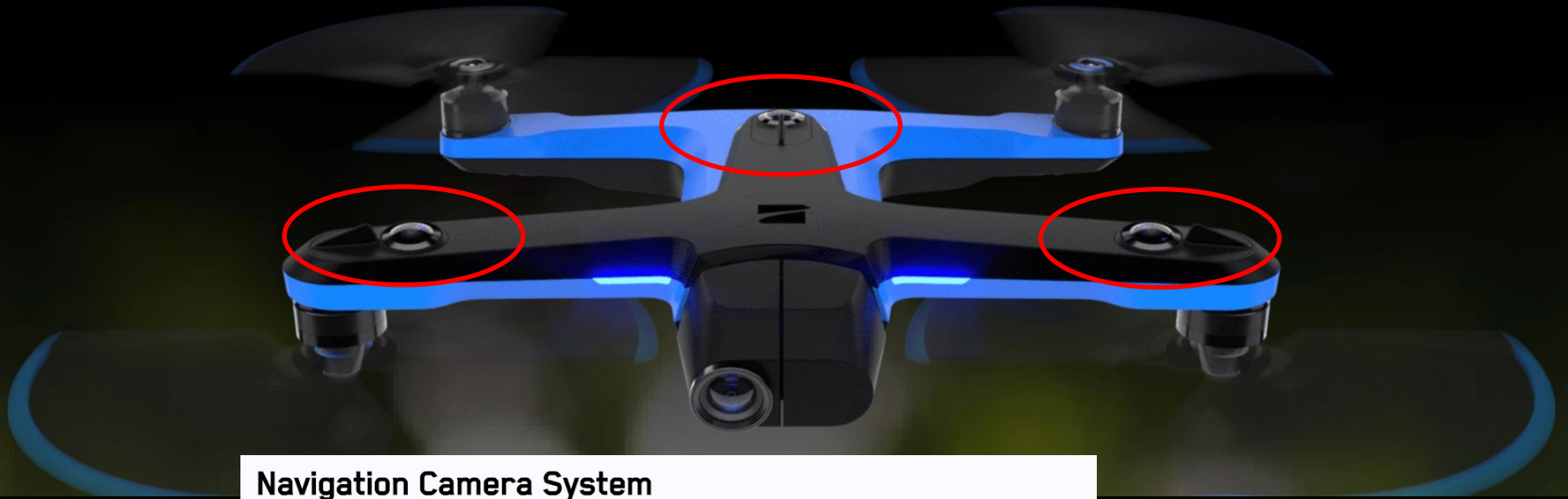
13. Image-based Rendering



14. Recognition

Trinocular Camera rigs

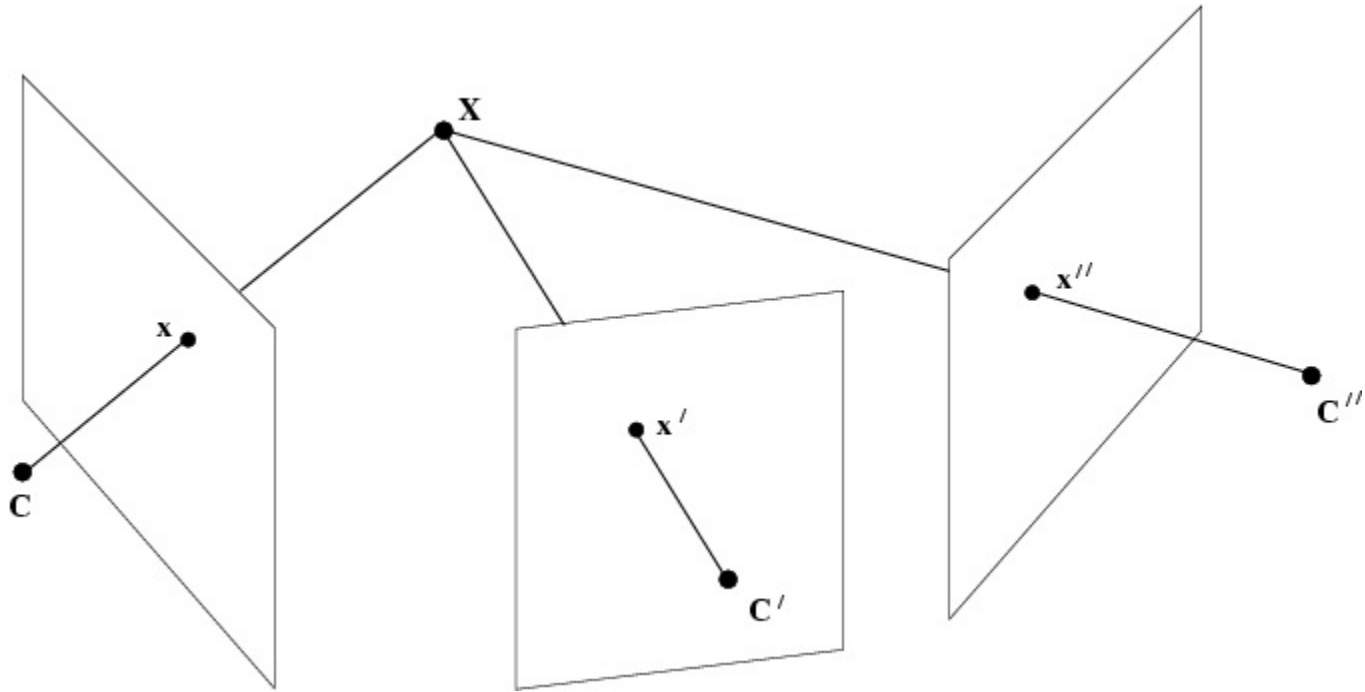
Skydio 2



Navigation Camera System

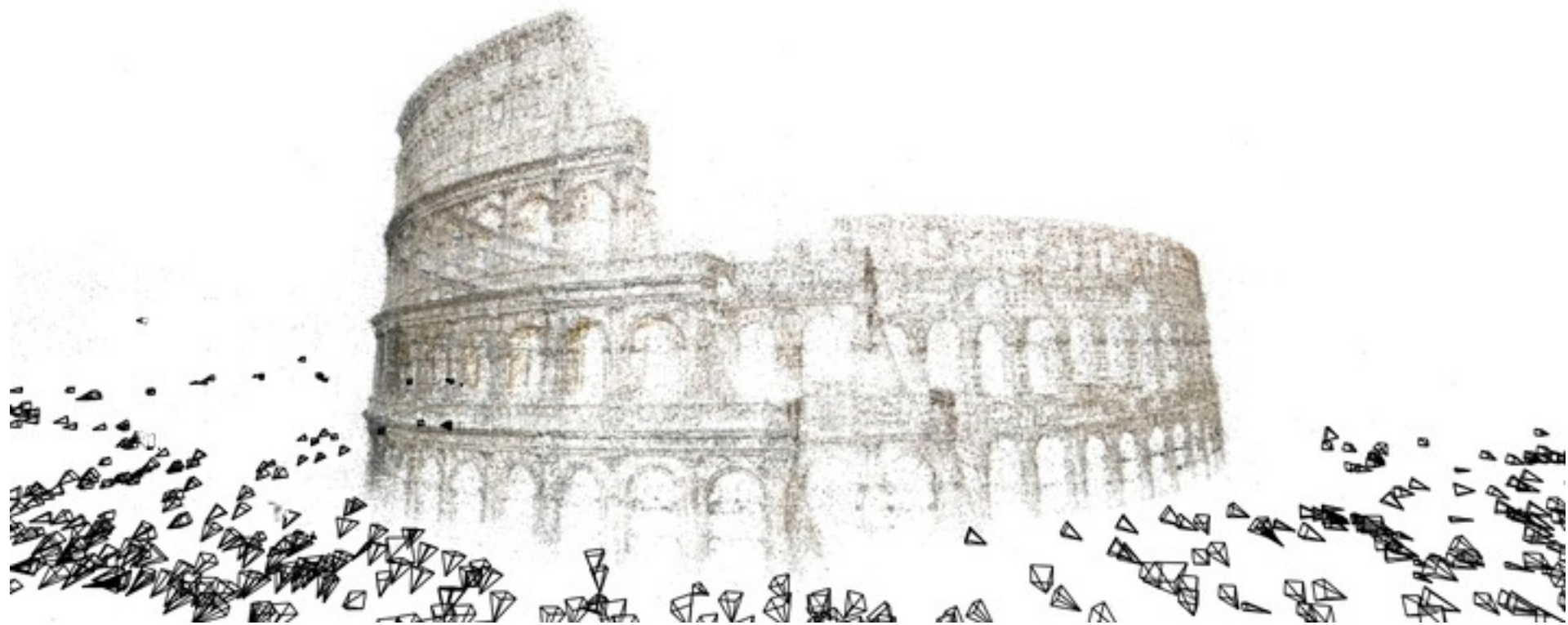
CONFIGURATION	6x cameras in trinocular configuration top and bottom
SENSOR TYPE	Sony 1/3" 4K color CMOS
LENS APERTURE	f/1.8
FIELD-OF-VIEW	200°
ENVIRONMENT COVERAGE	True 360°

Trifocal Geometry



$$[\mathbf{x}']_{\times} \left(\sum_i x^i \mathbf{T}_i \right) [\mathbf{x}'']_{\times} = \mathbf{0}_{3 \times 3}$$

Structure from Motion



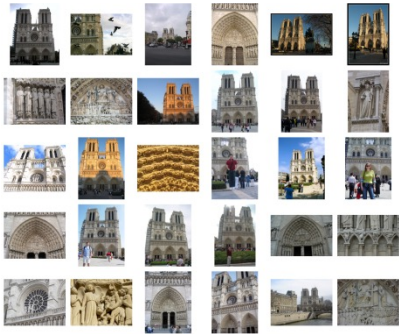
Building Rome in a Day
Agarwal et al

Motivation

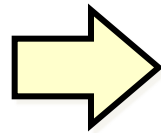
- Photo Tourism
- Photosynth
- Multi-view stereo
- Building Rome in a Day
- Rome on a Cloudless Day

Photo Tourism

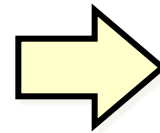
Noah Snavely, Steven M. Seitz, Richard Szeliski, [Photo tourism: Exploring photo collections in 3D,](#) ACM Transactions on Graphics (SIGGRAPH Proceedings), 25(3), 2006, 835-846.



Input photographs



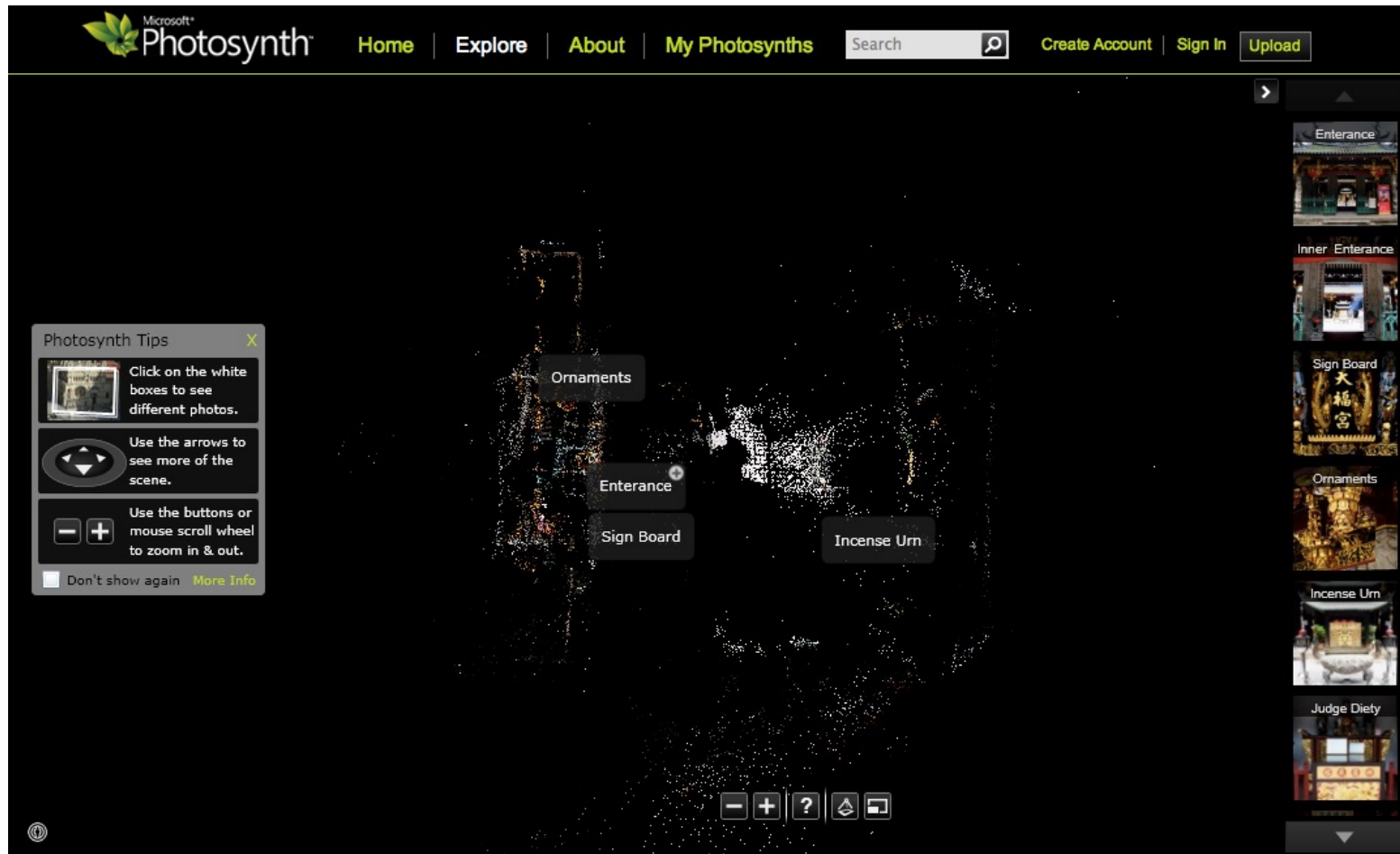
Scene
reconstruction



<http://phototour.cs.washington.edu/>

Photosynth

photosynth.net



- <http://photosynth.net/view.aspx?cid=29aa8616-a43a-43e4-9d6e-b8ad9b50483e>

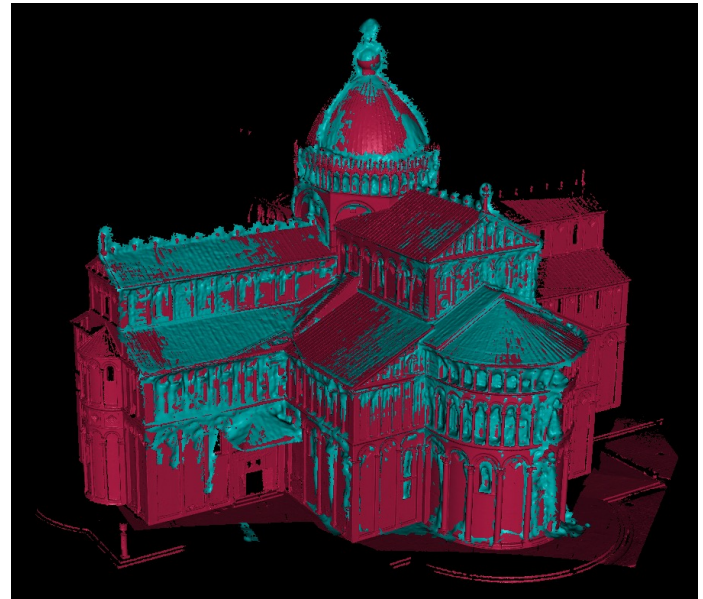
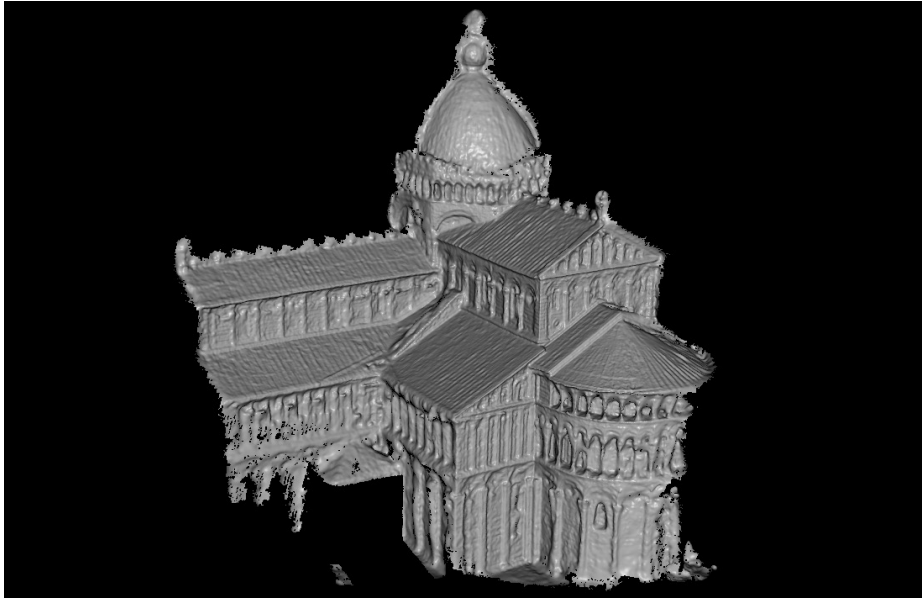
Multi-view Stereo

Multi-View Stereo for Community Photo Collections

Michael Goesele, Noah Snavely, Brian Curless, Hugues Hoppe, and Steven M. Seitz
ICCV 2007



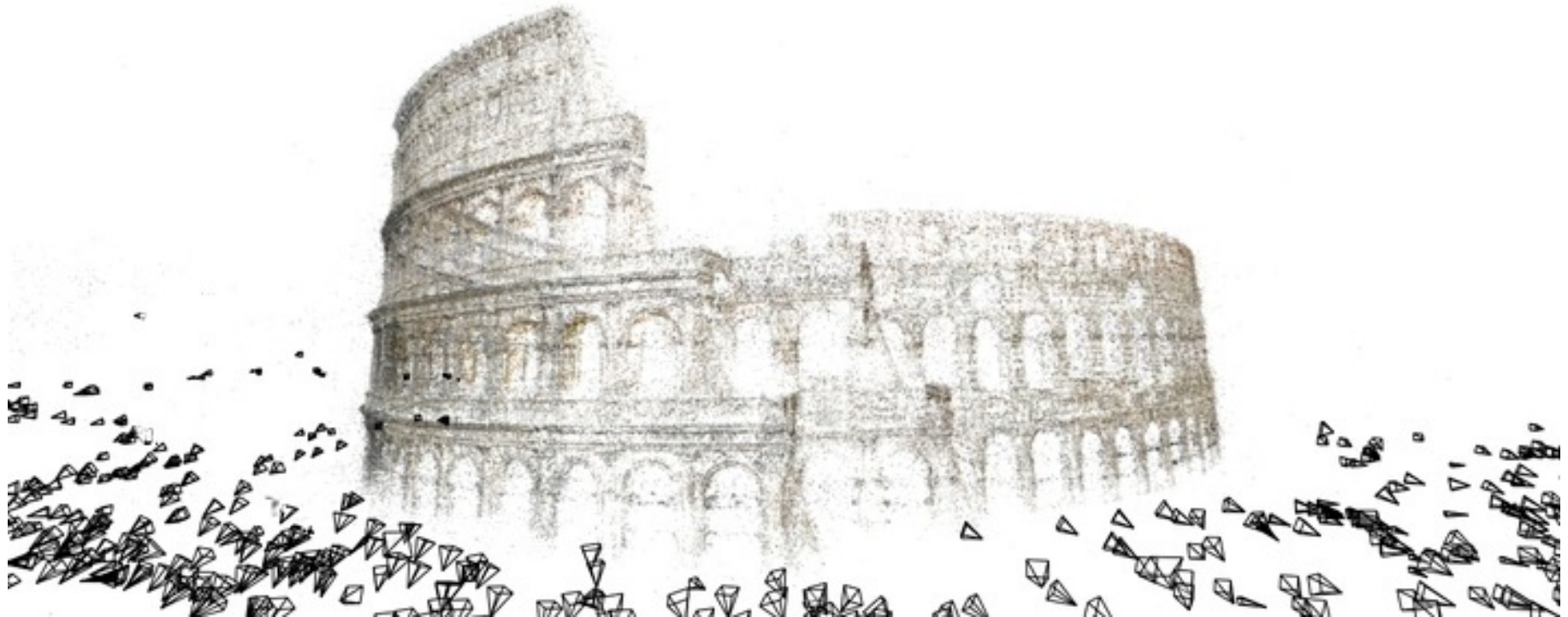
Multi-view Stereo



Compared with Laser-Scanner

Building Rome in a Day

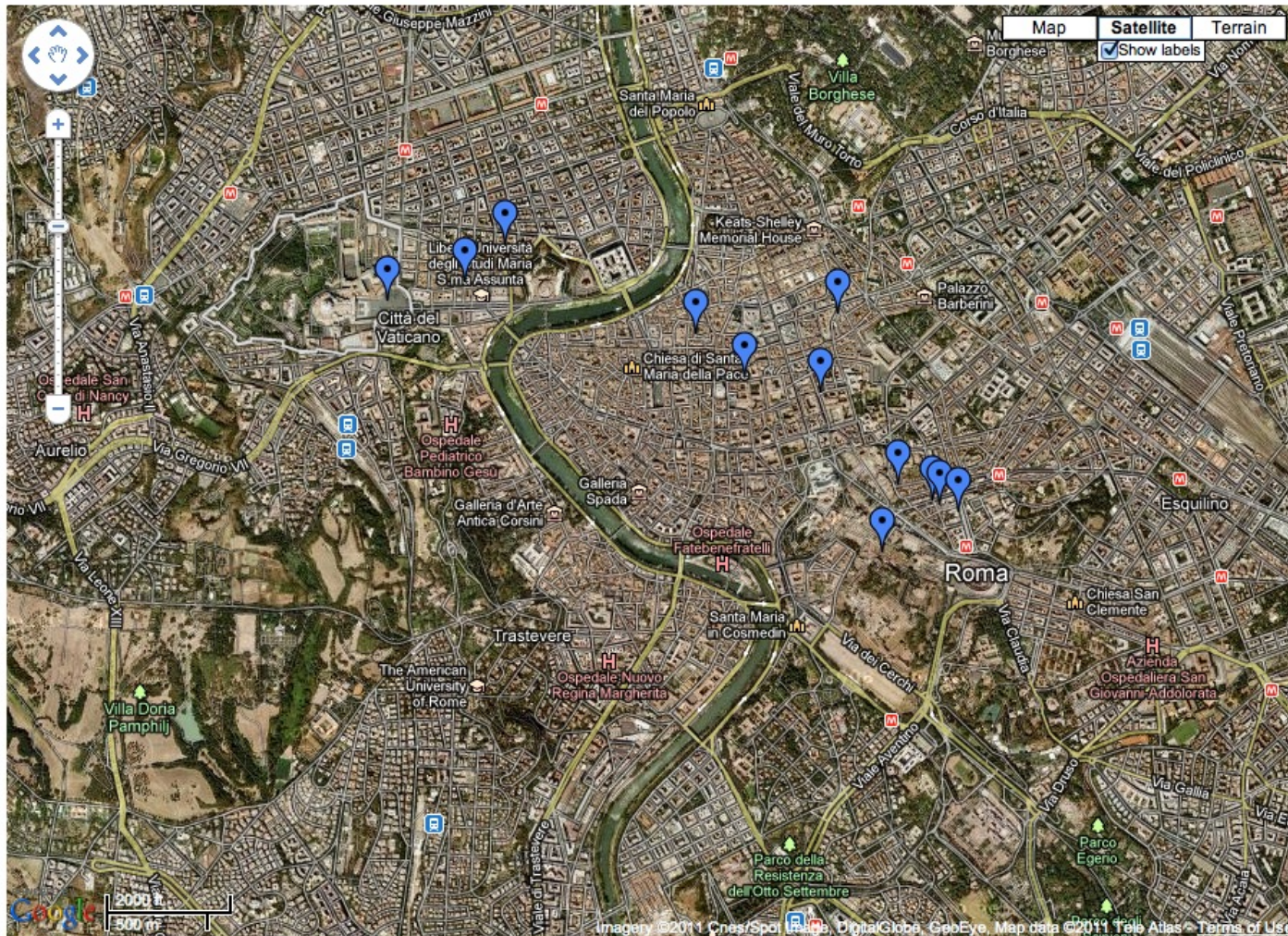
[Building Rome in a Day Sameer Agarwal, Noah Snavely, Ian Simon, Steven M. Seitz and Richard Szeliski International Conference on Computer Vision, 2009, Kyoto, Japan.](#)



<http://grail.cs.washington.edu/rome/>

Rome on a Cloudless Day

Jan-Michael Frahm, Pierre Georgel, David Gallup, Tim Johnson, Rahul Raguram, Changchang Wu, Yi-Hung Jen, Enrique Dunn, Brian Clipp, Svetlana Lazebnik, Marc Pollefeys, *ECCV 2010*



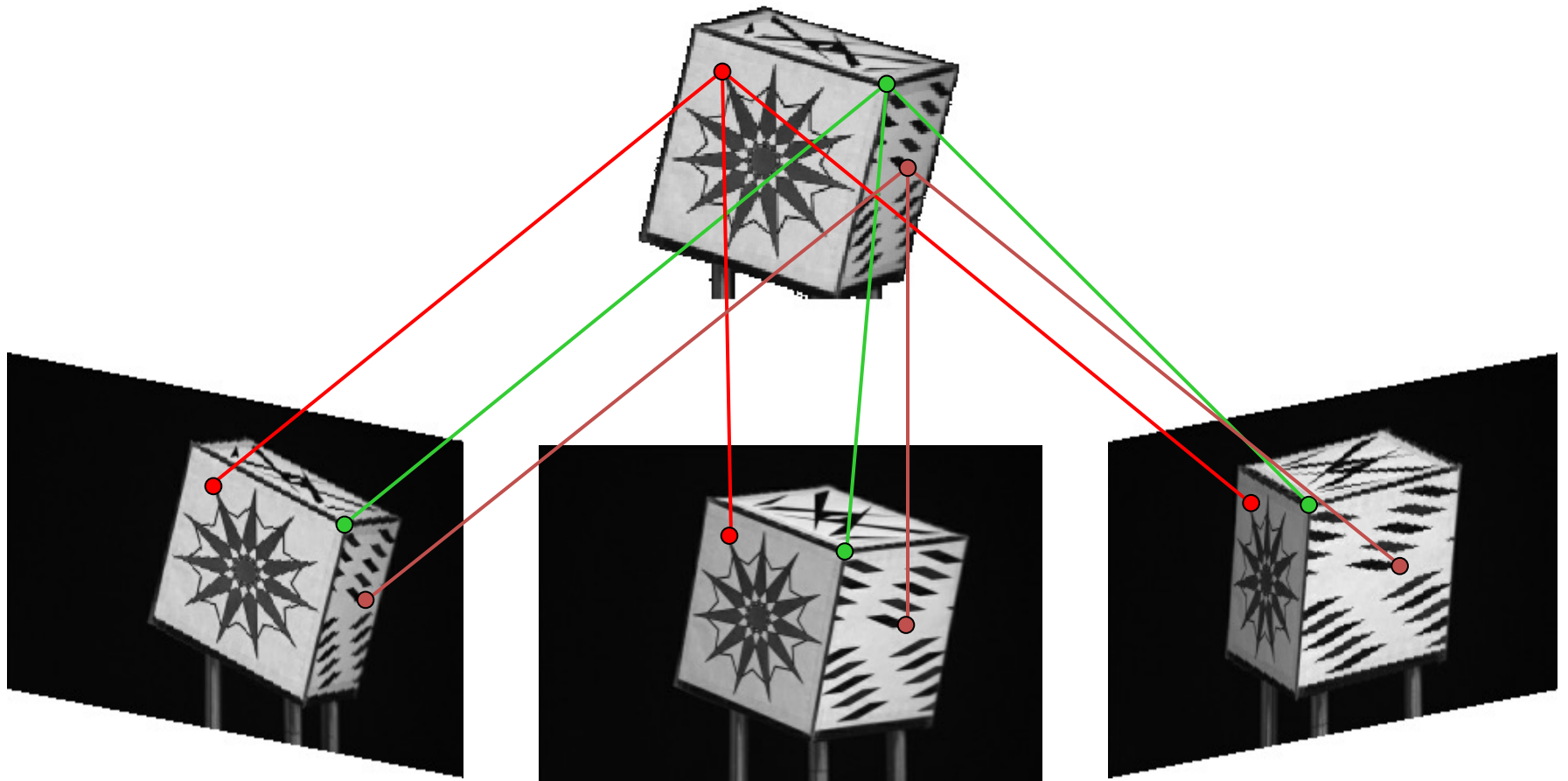
http://www.cs.unc.edu/~jmf/rome_on_a_cloudless_day/

2 Problems !

Correspondence

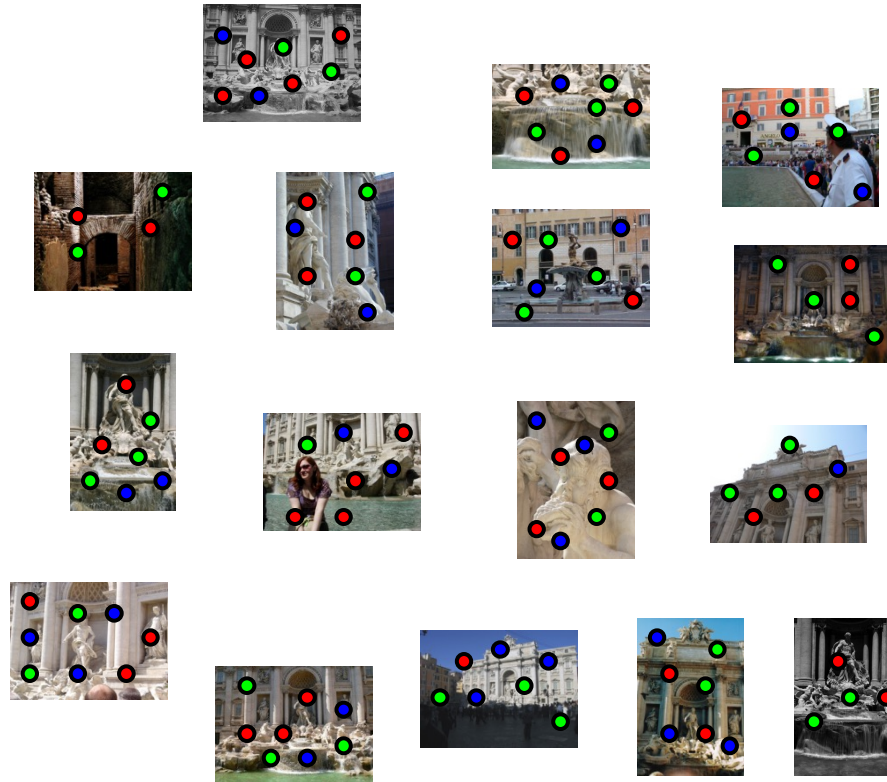
Optimization

A Correspondence Problem

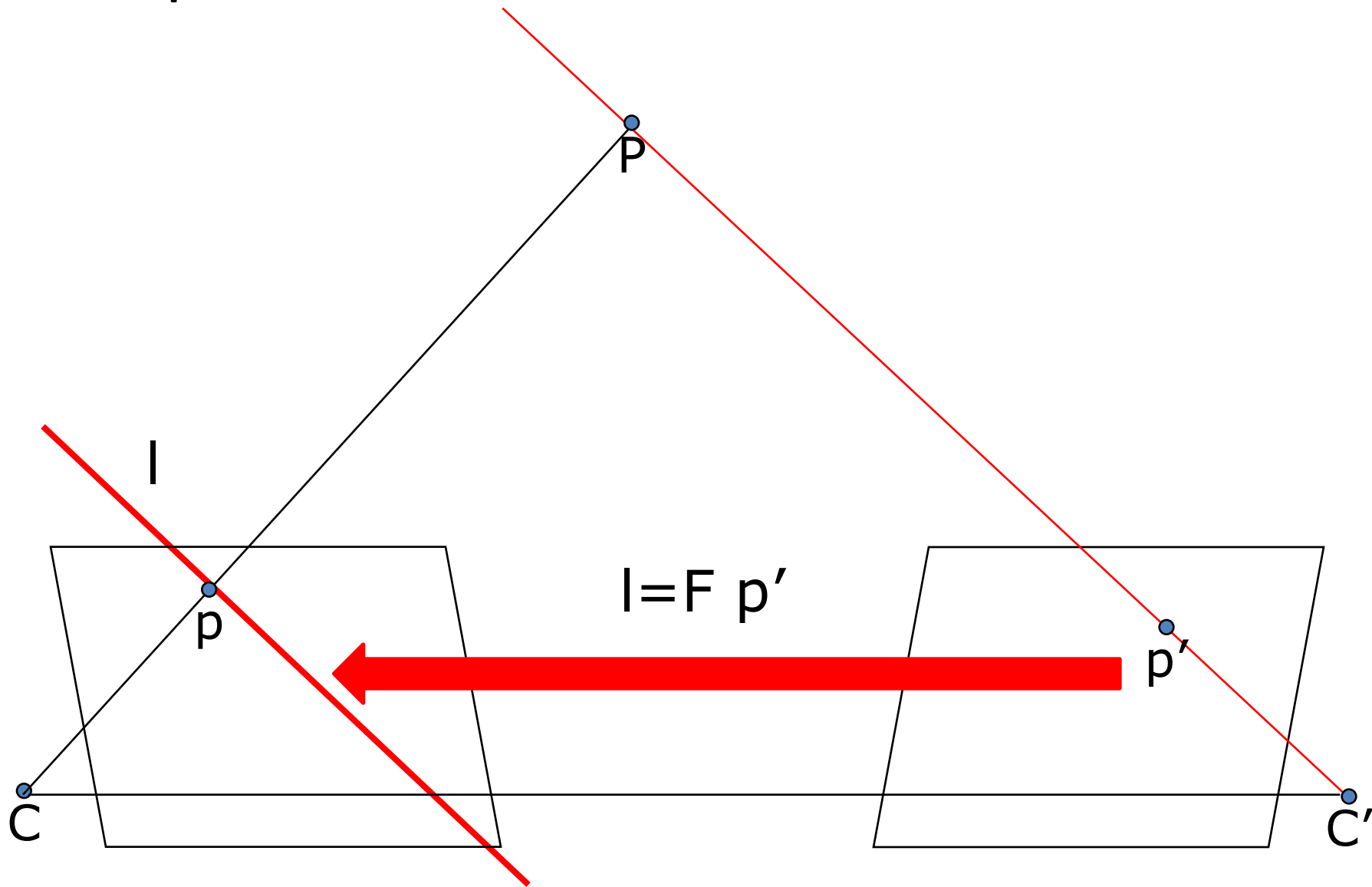


Feature detection

- Detect features using SIFT [Lowe, IJCV 2004]

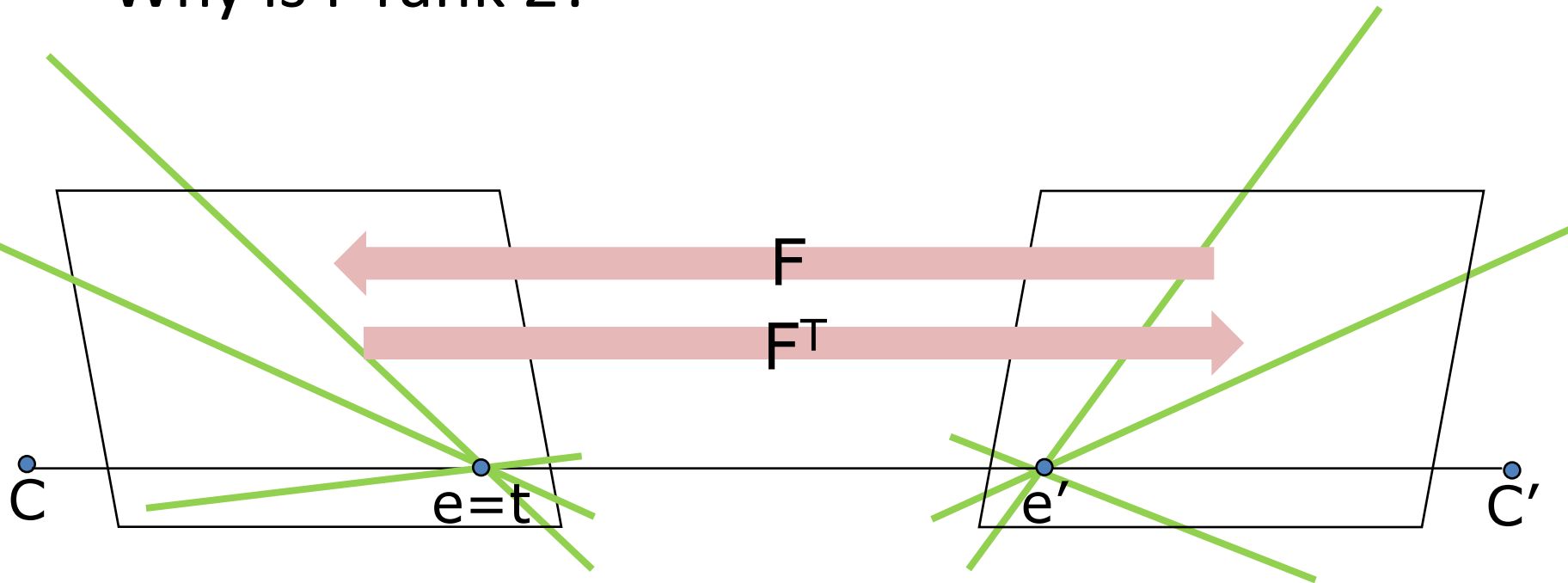


Recap: Two views and Fundamental Matrix F



Rank 2 Constraint

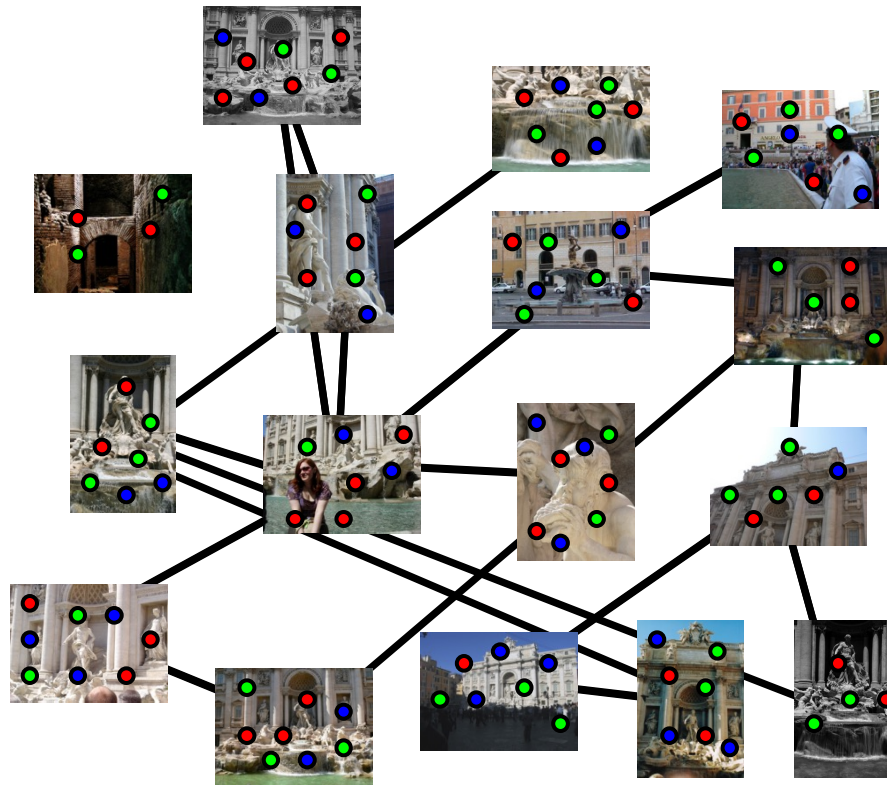
- Why is F rank 2?



- Not invertible! Collection of points is mapped to a pencil of lines. Epipoles map to zero.
- What would it mean to be rank 1?

Feature matching

Refine matching using RANSAC [Fischler & Bolles 1987] to estimate fundamental matrices between pairs



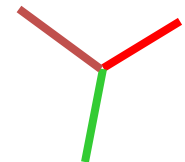
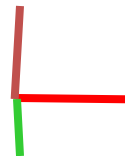
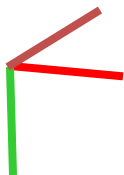
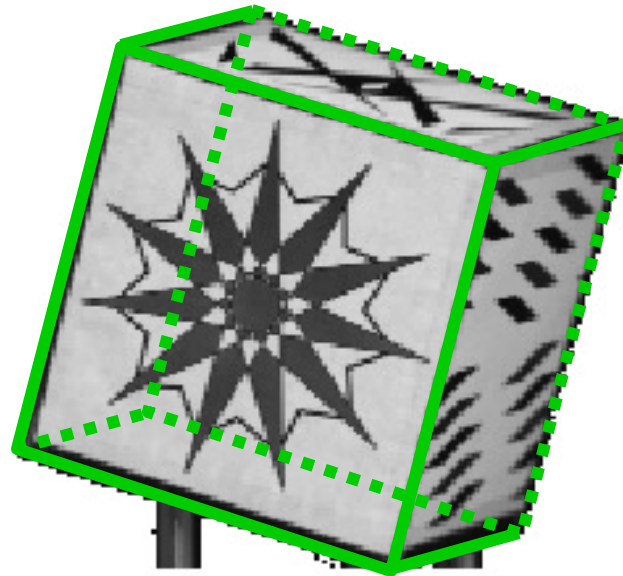
2 Problems !

Correspondence

Optimization

An Optimization Problem

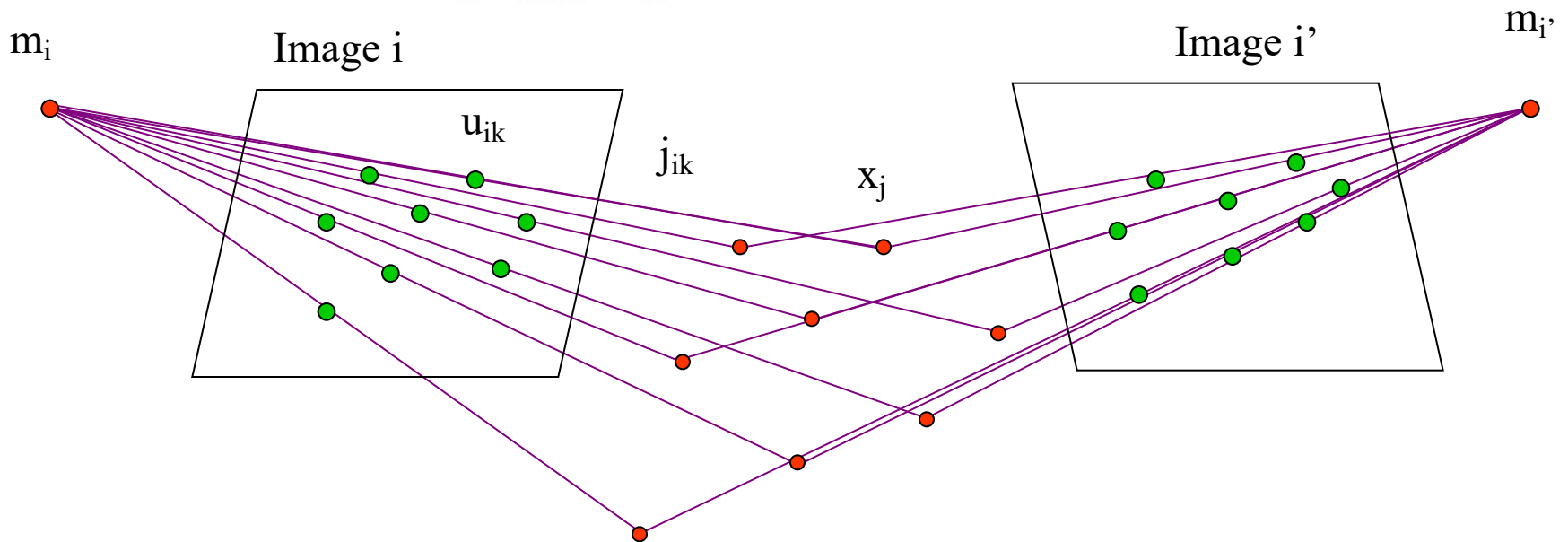
- Find the **most likely** structure and motion Θ



Optimization

=Non-linear Least-Squares !

$$\sum_{i=1}^m \sum_{k=1}^{K_i} \|\mathbf{u}_{ik} - \mathbf{h}(\mathbf{m}_i, \mathbf{x}_{j_{ik}})\|^2$$



Recall: Nonlinear Least Squares

$$E_{NLS} = \sum_i \|f(x_i; p) - x'_i\|^2$$

Linearize around a current guess p :

$$f(x; p + \Delta p) = f(x; p) + J(x; p)\Delta p$$

$$r = x' - f(x; p) = J(x; p)\Delta p$$

$$E_{NLS} = \sum_i \|f(x; p) + J(x; p)\Delta p - x'_i\|^2 = \sum_i \|J(x; p)\Delta p - r_i\|^2$$

Differentiate and set to 0:

$$2 \sum_i J^T(x_i; p) (J(x_i; p)\Delta p - r_i) = 0$$

Normal equations — $\left[\sum_i J^T(x_i; p) J(x_i; p) \right] \Delta p = \sum_i J^T(x_i; p) r_i$

$$A\Delta p = b$$

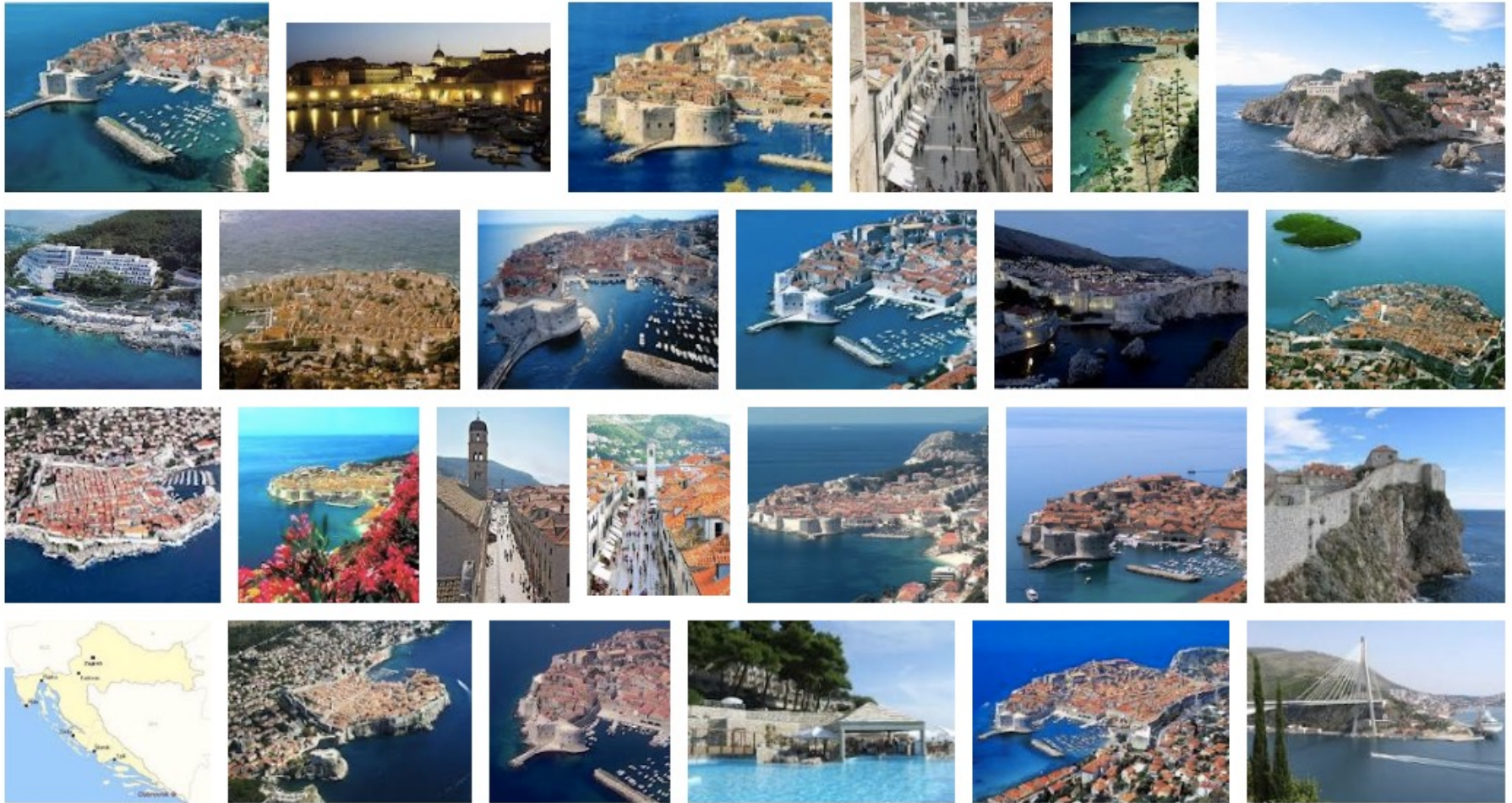
$$\Delta p^* = A^{-1}b$$

Hessian

Jacobian

3D Models from Community Databases

- E.g., Google image search on “Dubrovnik”



3D Models from Community Databases

Agarwal, Snavely, Seitz et al. at UW <http://grail.cs.washington.edu/rome/>



5K images, 3.5M points, >10M factors

Hyper-SFM: Efficient Multi-core



Kai now leads an autonomous driving startup in China

[Kai Ni](#), and [Frank Dellaert](#), [HyperSfm](#), [IEEE International Conference on 3D Imaging, Modeling, Processing, Visualization and Transmission \(3DIMPVT\)](#), 2012.

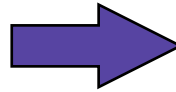
4D Reconstruction

Spatiotemporal Reconstruction

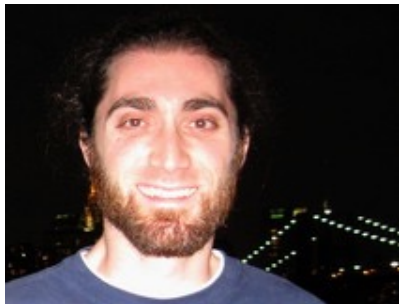
4D Cities: 3D + Time



Historical Image Collection



Supported by NSF CAREER, Microsoft
Recent revival: NSF NRI award on 4D
crops for precision agriculture...



Grant Schindler

4D Reconstruction of Lower Manhattan

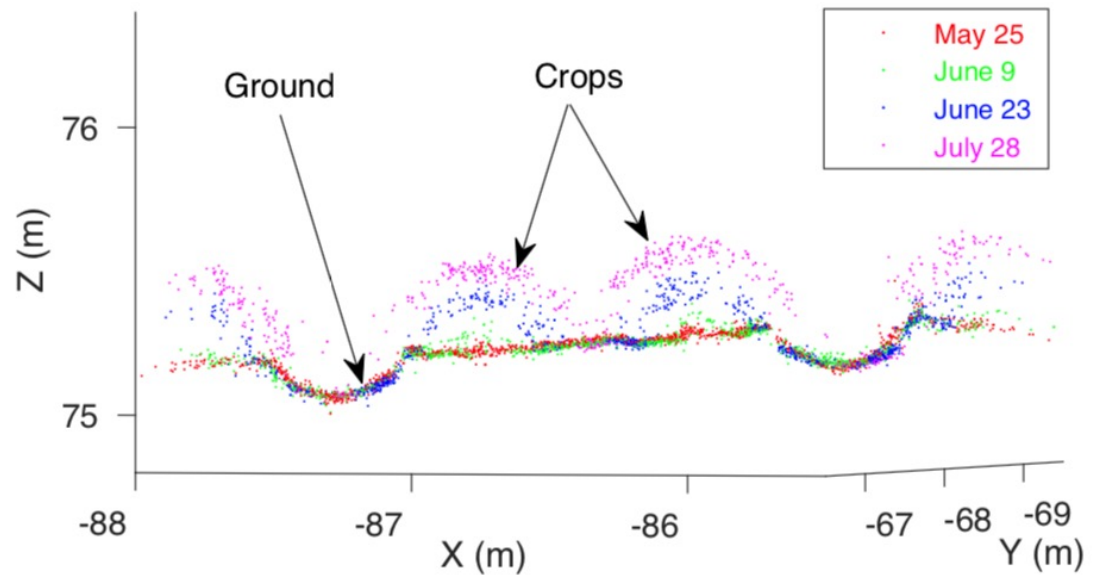
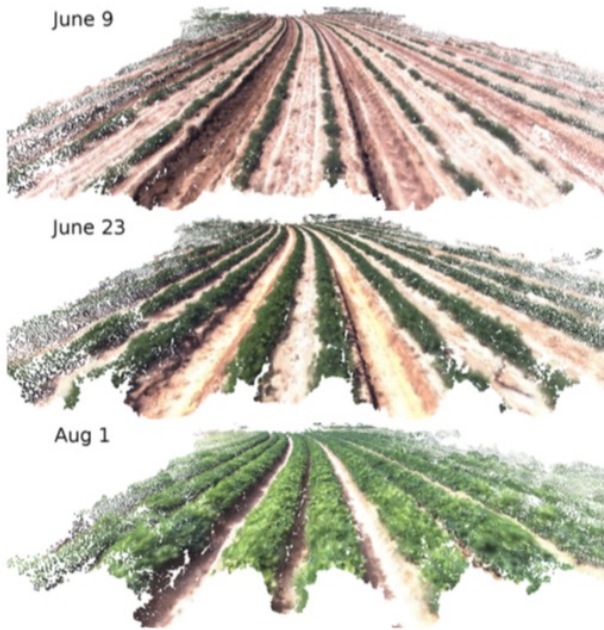


[Probabilistic Temporal Inference on Reconstructed 3D Scenes](#), G. Schindler and F. Dellaert, IEEE Computer Society Conference on Computer Vision and Pattern Recognition (CVPR), 2010.

4D Structure over Time



4D crop monitoring (Jing Dong)



Results: video (by Jing Dong)

May 25, 2016



May 25, 2016



4D reconstruction results (by PMVS)
and its cross section